

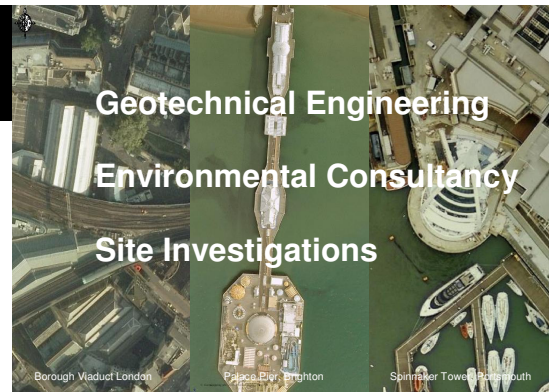
# Network Rail

**Sector:** Rail and Transport

**Value:** Approx. £450k

**Date:** 2008 to Present

**We Value:**  
Quality  
Health and Safety  
Environmental Management  
Sustainability  
Equal Opportunity



## Services Supplied on this Project:

- Deep Cable Percussion Boreholes
- Rotary Boreholes
- Boretrak Verticality Testing
- Window Sampling
- Dynamic Probing
- Concrete/Masonry Coring
- Deep Hand Excavated Trial Pits
- Form C.

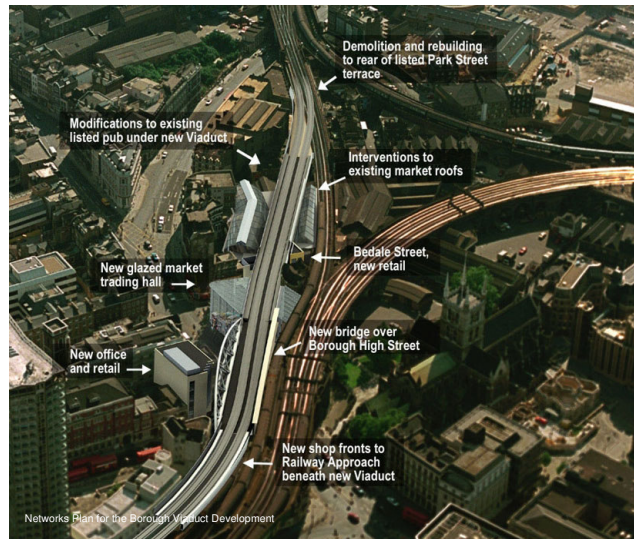
## The Project

Geo-Environmental has undertaken a comprehensive ground and structural investigation for a new bridge and viaduct structure which forms part of the £5.5bn Thameslink Programme.

The site works comprised investigations in busy public spaces including Borough Market, Southwark Street and Railway Approach (leading to London Bridge Station).

With such a complex project Geo-Environmental had to work with a wide range of stakeholders which included: Network Rail, Skanska, TfL, Atkins, Museum of London, Planning Authority, and Borough Market.

## Expertise



Due to the complex nature of the project and challenging working environment, investigative methods required adaptation whilst on site in order to deliver the required objectives. Geo-Environmental's experienced team was able to advise the client on the most suitable techniques and implement them seamlessly into the scope of works thus avoiding any undue delays to the project. Geo-Environmental also had to comply with both the Main Contractor (Skanska) and the client's rigorous Health and Safety requirements. Geo-

Environmental was able to provide in a timely fashion all the required documentation including Work Package Plans, Task Briefings and Form Cs (for temporary works design).

## Benefits

Geo-Environmental prides itself on offering clients a personal service and in a complex working environment this approach produced a successful outcome under challenging conditions. Geo-Environmental professional and flexible approach to the works together with effective communication with the Stakeholders Network Rail, Skanska, TfL, Atkins, Museum of London, Planning Authority, and Borough Market assisted in achieving the projects goals and ultimately the likely successful delivery of this important transport link in time for the 2012 Olympics.

28 Crescent Road, Brighton,  
East Sussex, BN2 3RP  
Tel: +44 1273 699399  
www.gesl.net



**Geo-Environmental**

**Excellence in Geotechnical and Environmental Services**

We are a trusted supplier of choice for Geotechnical and Environmental Services for our customers by delivering consistent quality and reliability, taking seriously our obligations to operate safely and sustainably, valuing and supporting our workforce and delivering value for money for our customers.