

Ardent Consulting Engineers

Sector: Sport & Leisure

Value: Approx. £6k

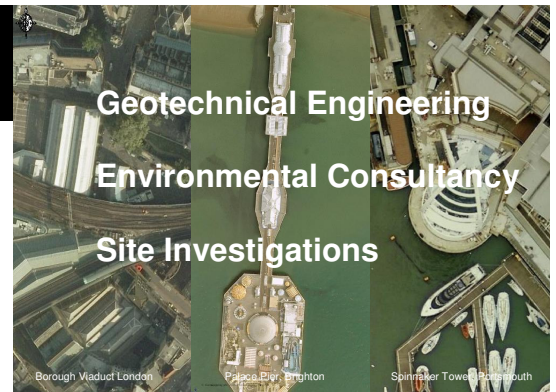
Date: 2009

Services Supplied on this Project:

- Trial pit soakage tests in accordance with BRE Digest 365;
- Chemical Testing, Human Health Risk Assessment;

We Value:

Quality
Health and Safety
Environmental Management
Sustainability
Equal Opportunity



The Project

Geo-Environmental undertook an investigation, on behalf of Ardent Consulting Engineers for the proposed football training ground for Colchester United Football Club. The site extended over a large undeveloped parcel of land on the edge of Tiptree in Essex and had formerly been used for agriculture.

The scope of works comprised an intrusive investigation to assess the feasibility of the project in terms of soakage potential for storm water disposal and assess the risk of contamination in the near surface soils. At the time of the investigation, the site had open access and was popular with local dog walkers, appropriate safety precautions were taken.



Expertise

Geo-Environmental worked closely with the Client to provide detailed assessment of ground infiltration rates with respect to soakaway design. The geology of the site varied both laterally and vertically and Geo-Environmental were able to provide specific expertise in relation to local geological hazards, their identification and implications for development.

Benefits

Geo-Environmental worked closely with Ardent Consulting Engineers to deliver a professional, tailored and bespoke investigation to meet the client's specific requirements on this project. Geo-Environmental was able to present the assessment and a range of comprehensive recommendations in a clear and concise manner.

28 Crescent Road, Brighton,
East Sussex, BN2 3RP
Tel: +44 1273 699399
www.gesl.net



Excellence in Geotechnical and Environmental Services

We are a trusted supplier of choice for Geotechnical and Environmental Services for our customers by delivering consistent quality and reliability, taking seriously our obligations to operate safely and sustainably, valuing and supporting our workforce and delivering value for money for our customers.

Geo-Environmental