

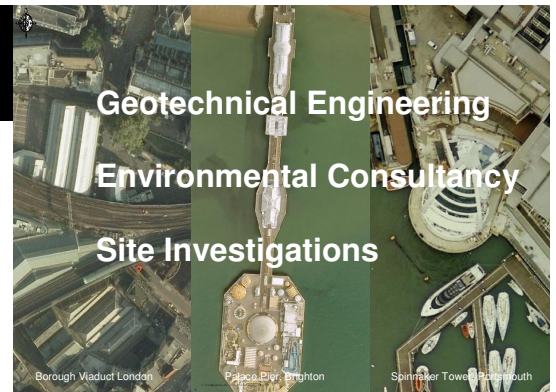
George and Harding

Sector: Commercial Development

Value: Approx. £45k

Date: 2007

We Value:
Quality
Health and Safety
Environmental Management
Sustainability
Equal Opportunity



Services Supplied on this Project:

- Desk Study Assessment;
- Sub-Surface Services Survey
- Intrusive Ground Investigation by Cable Percussion Rig, Window Sampling and Hand Excavation of Trial Pits;
- Geotechnical Assessment for Foundations and Earthworks;
- Contamination Risk Assessment;
- Ground Gas Risk Assessment

The Project

Geo-Environmental undertook geotechnical and environmental ground investigations, on behalf of George and Harding, at ten Travelodge Hotel sites across the country to ascertain ground conditions for the design of new hotel buildings and extensions to existing hotel buildings. The site works were programmed to be undertaken over a period of ten working days and were co-ordinated to run consecutively.



The investigations were carried out during hotel operations, within the Travelodge car parks and immediately around the footprints of each hotel buildings.

Geo-Environmental's ability to provide robust Health and Safety strategies to provide protection for the site investigation operatives, general public, and Travelodge customers and workers proved to be a key element in the success of the works.

Expertise

Geo-Environmental was able to provide a robust Health and Safety Plan, relevant site specific Risk Assessments and Method Statements for all works carried out on each of the ten sites across the country.

Benefits

Utilising strict site controls and following robust, yet pragmatic health and safety protocols, the works were carried out in such a manner as to limit disruption and associated risks to Travelodge customers, the general public and the hotels infrastructure.

The Travelodge contract was awarded to Geo-Environmental, despite keen competition from other ground investigation companies, primarily due finding ways of significantly cutting costs without compromising the quality of the end product.

The reports for each site were delivered on time and within budget. Subsequent to this contract, Geo-Environmental have been awarded work on several further Travelodge sites with an approximate contract value in excess of £60k. We continue to maintain a very good working relationship with the client, associated consultants and design and build contractors.

28 Crescent Road, Brighton,
East Sussex, BN2 3RP
Tel: +44 1273 699399
www.gesl.net



Excellence in Geotechnical and Environmental Services

We are a trusted supplier of choice for Geotechnical and Environmental Services for our customers by delivering consistent quality and reliability, taking seriously our obligations to operate safely and sustainably, valuing and supporting our workforce and delivering value for money for our customers.

Geo-Environmental