

# Barratt Southern Counties Ltd

**Sector:** Housing and Commercial Development

**Value:** Approx. £30k

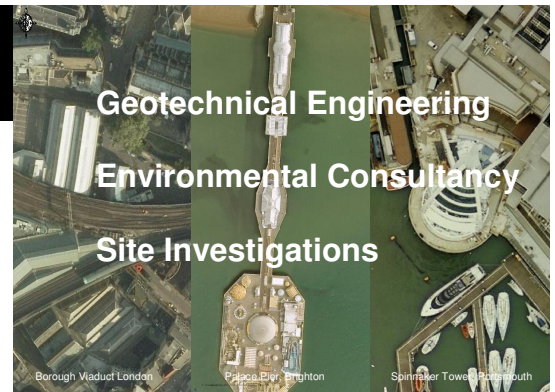
**Date:** April 2007 to September 2009

## Services Supplied on this Project:

- Phase 1 desk study assessment;
- Contaminated Land Investigation Strategy;
- Trial pitting;
- Deep Cable percussion boreholes
- Window sampling;
- Monitoring well installation;
- Geotechnical Assessment
  - Foundations
  - Retaining Structures
- Geo-Environmental Assessment
  - Contamination risk assessment for human health, controlled water and built environment
- Ground gas risk assessment;
- Remedial Strategy;
- Remediation Method Statement;

28 Crescent Road, Brighton,  
East Sussex, BN2 3RP  
Tel: +44 1273 699399  
[www.gesl.net](http://www.gesl.net)

**We Value:**  
Quality  
Health and Safety  
Environmental Management  
Sustainability  
Equal Opportunity



## The Project

Geo-Environmental undertook phased investigations on land at Guildford Road, Woking on behalf of Barratt Southern Counties for their New Central Development. The development comprised the construction of a mixed use development comprising 445 studio, 1 bed and 2 bed apartments, 4 bed town houses, live / work units, office, retail and food and drink space. The project provided several challenges due to the complex history of the site which included parts of the site being occupied by a fuel filling station, and many other potentially contaminative businesses. Furthermore, the site presented geotechnical challenges due to the proposed height of the apartment blocks (up to 22 storeys) and the large basement occupying the entire development footprint.



## Expertise

Geo-Environmental has undertaken many investigations in the Woking area and as such had extensive prior knowledge on the anticipated ground and groundwater conditions beneath the site. Furthermore, Geo-Environmental has built-up a strong reputation with the local regulators and as such was able to liaise effectively with them and work collaboratively.

## Benefits

Geo-Environmental's local expertise and knowledge of the anticipated ground conditions allowed the cost effective design of the investigation. In addition, effective communication with the relevant stakeholders including the local regulator ensured that the aims and objectives of the investigation were met in a timely manner.



**Geo-Environmental**

**Excellence in Geotechnical and Environmental Services**

We are a trusted supplier of choice for Geotechnical and Environmental Services for our customers by delivering consistent quality and reliability, taking seriously our obligations to operate safely and sustainably, valuing and supporting our workforce and delivering value for money for our customers.